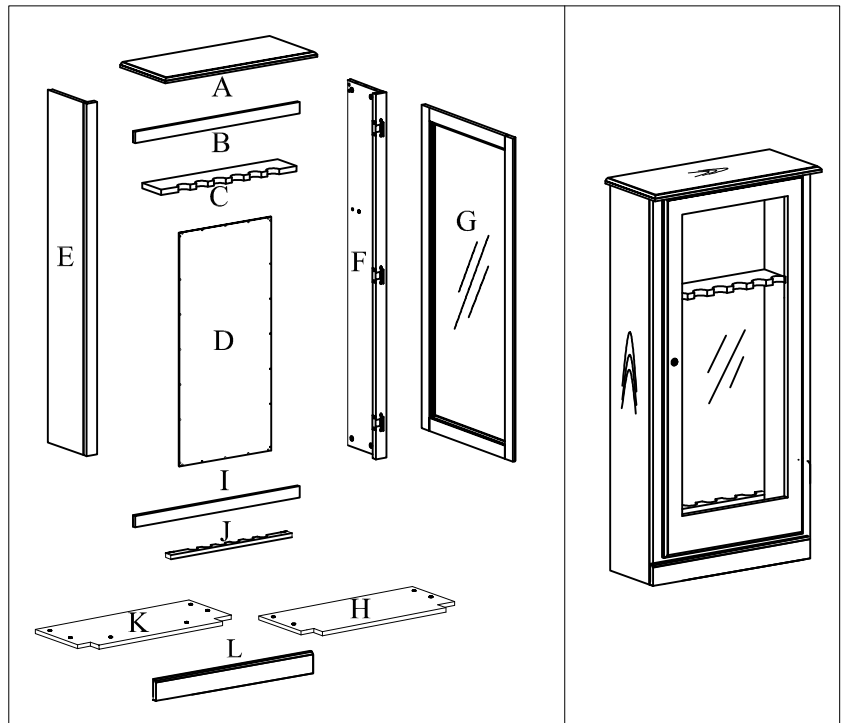


Assembly Instructions

724# Gun Cabinet

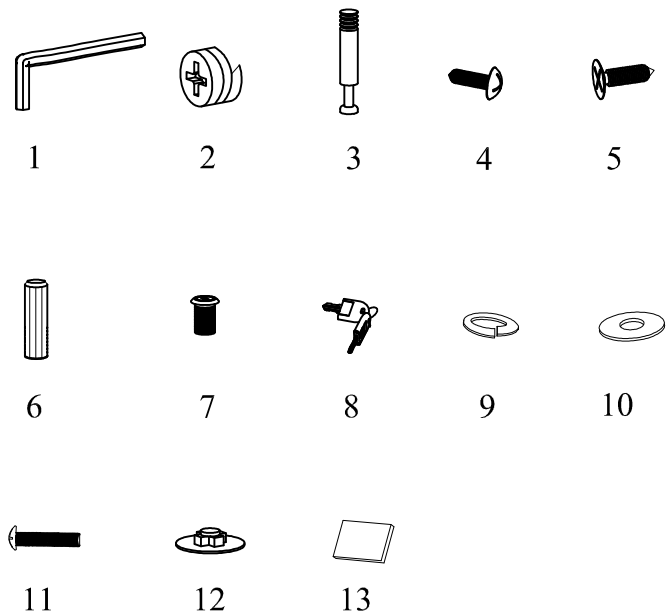
Components List:

- A. Top Panel1pc
- B. Upper Back Rail.....1pc
- C. Barrel Rest.....1pc
- D. Back Panel.....1pc
- E. Left Side Panel.....1pc
- F. Right Side Panel with Hinges.....1pc
- G. Door Panel1pc
- H. Lower Panel1pc
- I. Lower Back Rail.....1pc
- J. Lower Barrel Rest.....1pc
- K. Lower Middle Panel.....1pc
- L. Lower Front Rail.....1pc



Hardware List:

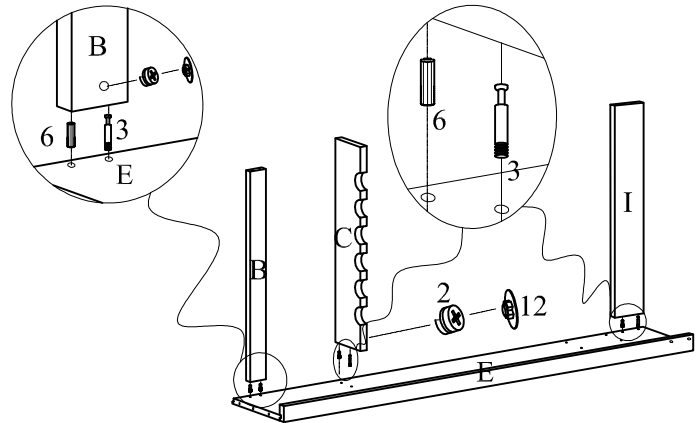
- 1. "L"Wrench1pc
- 2. Cam Locks.....18pcs
- 3. Cam bolts.....18pcs
- 4. Round Head Wood Screw.....32pcs
- 5. Flat Head Hinge Screw.....6pcs
- 6. Dowel.....12pcs
- 7. Lock.....1set
- 8. Keys.....1set
- 9. Spring Washer.....6pcs
- 10. Flat Washer.....6pcs
- 11. Machine Screw.....6pcs
- 12. Cover.....18pcs
- 13. Door Spacer Block.....1pc



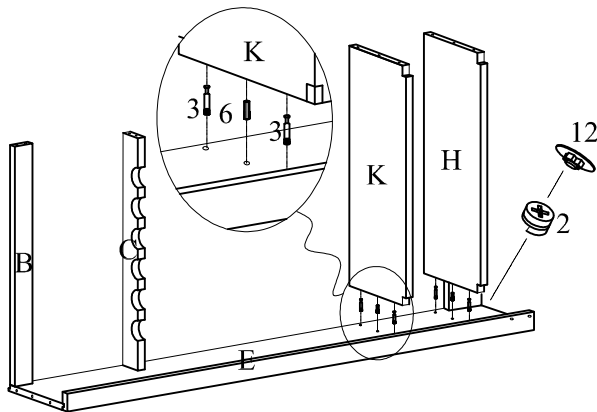
Assembly Instructions: 724# Gun Cabinet

Step 1:

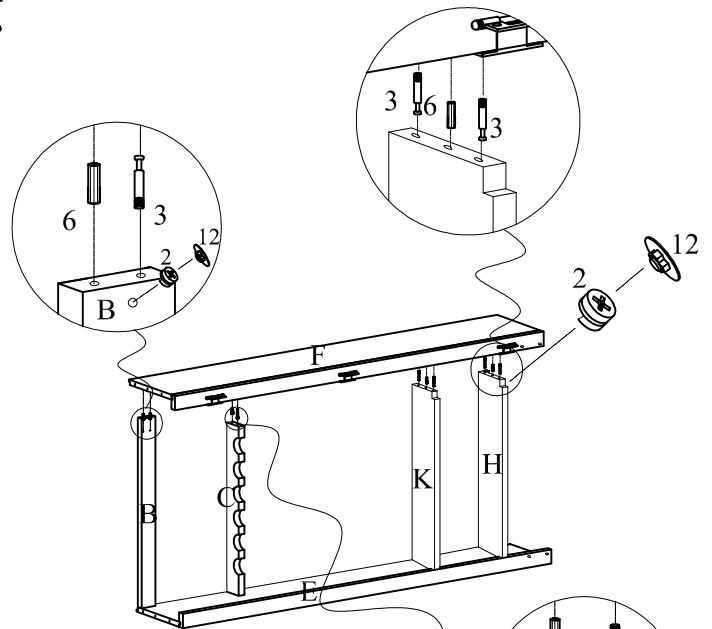
Place Left side panel(E)down on a clean,smooth surface.Attach Upper Back Rail(B) and Lower Back Rail(I)by inserting Dowels(6) into the non-threaded holes,Screw Cam Bolt(3)into the threaded holes in Barrel Rest(C),Insert Cam-Lock(2) into the large holes in Left side panel(E),rotate clockwise Cam-Lock(2) using "L"Wrench(1),Then insert Cover(11)into Cam-Lock(2).



Step 2



Step 1



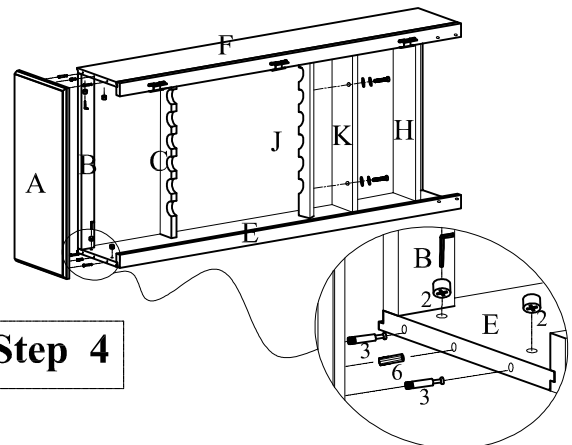
Step 2:

Screw Cam bolt(3) into the threaded holes in Lower Panel(H) and Lower Middle Panel(K), insert Cam-Lock (2) into the large holes in Left side panel (E) , rotate clockwise Cam-Lock(2) using "L" Wrench(1), then insert Cover(11) into Cam-lock (2) .

Step 3:

Attach Right side panel(F)by inserting Dowels(6)into the non-threaded holes and screwing Cam bolt(3)into the threaded holes, insert Cam lock(2) to the bottom holes on Right side panel(F) ,Rotate Cam lock(2)clockwise with "L" wrench, then insert Cover(11) into Cam lock (2).

Step 3



Step 4:

Screw Cam bolt(3) into the threaded holes in Top panel(A), insert Cam-Lock (2) into the large holes in Left & Right side panel (E & F) , rotate clockwise Cam-Lock(2) using "L" Wrench(1), then insert Cover(11) into Cam lock (2) ,Place the Lower Barrel Rest(J) on the Lower Middle Panel(K),By insert Spring Washer(9)&Flat Washer(10) and Machine Screw(11) into the non-threaded hole,Tight with "L"Wrench(1).

Step 4

Assembly Instructions: 724# Gun Cabinet

Step 5:

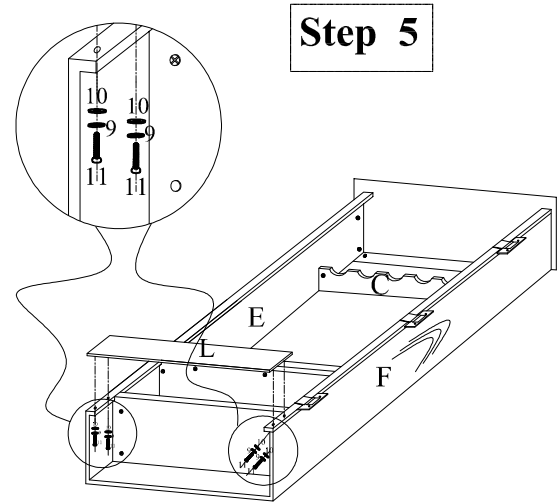
Attach Lower Barrel Rest(J) on Lower Panel(K) and attach Lower Front Rail(L) on the both of Lower Panel(K) and Lower Panel(H), by inserting Spring Washer(9) & Flat Washer(10) and Machine Screw(11) into the non-threaded holes, Tight all bolts with "L" Wrench(1).

Step 6:

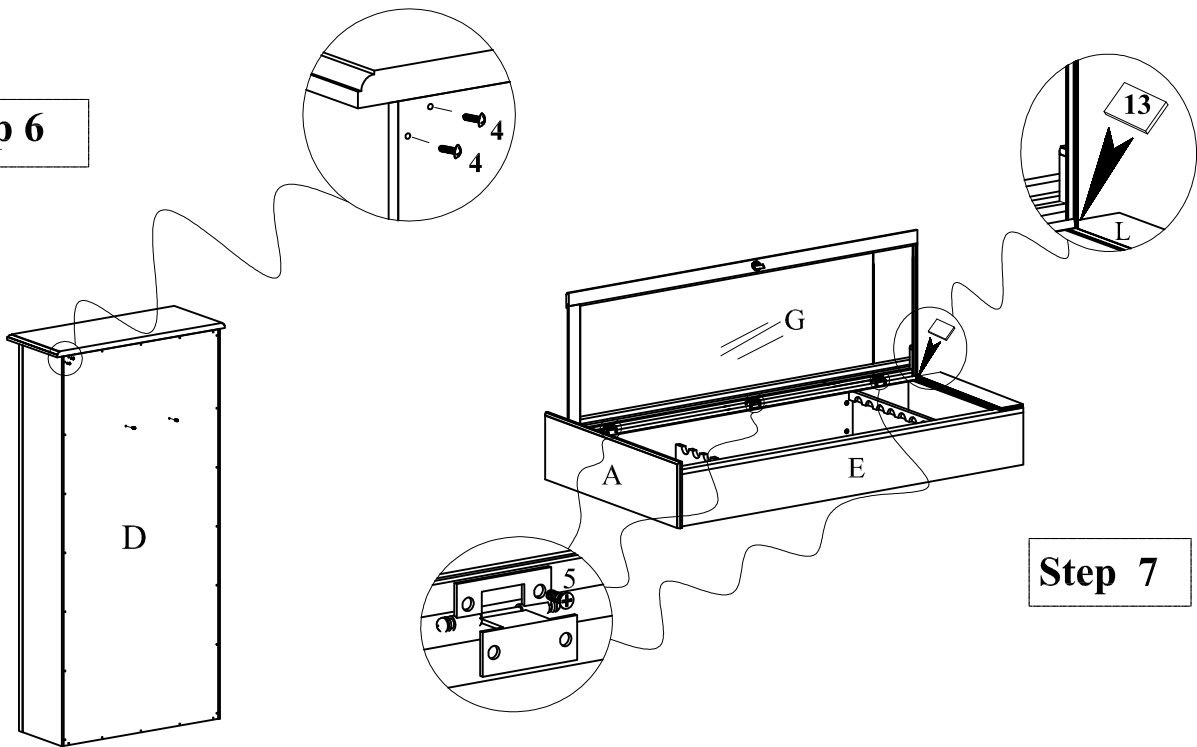
Attach Back Panel (D) to the back of assembled cabinet using Round head wood screw (4). Screw Round head wood screw(4) to the back of Barrel rest(C) Tighten with "L" wrench(1).

Step 7:

Place gun cabinet down on a clean surface. Place Door spacer block(13) on Lower panel(H), Insert Flat head hinge screw(5) through the holes of the hinges and tighten into the Door panel(G), take off Door spacer block(13).



Step 6



Assembly is now complete.

For extra safety we suggest you install the "Furniture Tipping Restraint" Provided in the separate hardware bag.

Post Office Box 111 - Webb City, Missouri 64870 - 0111

Toll Free - 888 - 673 - 9080

Fax - 417 - 673 - 9081

To order replacement parts online please visit:

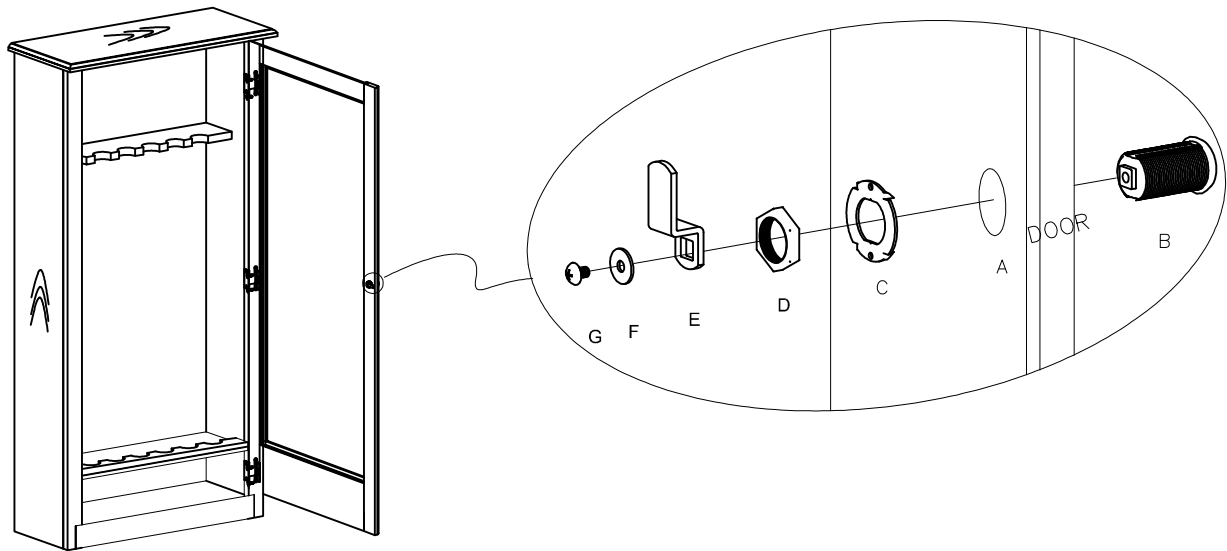
www.AmericanFurnitureClassics.com

or E - mail :

service@americanfurnitureclassics.com

Assembly Instructions

Install the lock of the door



A. Lock hole
B. Lock
C. Gear Washer
D. Nut

E. Pin
F. Washer
G. Screw

Step:

1. Insert Lock (B) into the Lock Hole (A).
2. Put Gear Washer (C) on the Lock (B).
3. Screw Nut (D) on Lock (B).
4. Place Pin (E) onto Lock Barrel(B), Make sure the rectangular hole on Pin (E) and on Lock Barrel(B) are aligned properly.
5. Place Washer (F) onto Lock Barrel(B) and insert Screw(G)into the end of Lock Barrel(B).
6. Tighten or loosen Screw(G) until Pin(E) fits tightly behind the back edge of the Door Frame when door is fully closed and lock is locked position.